



The mission of ExpRAssess:

Because electricity is essential for the future, ExpRAssess supports you in the technical control of your networks.

ExpRAssess proposes its expertise on HV and LV electrical networks:

- Consulting and technical support,
- Assistance for the reliability and security of the networks,
- Assistance for rehabilitation and compliance,
- Diagnosis following incident,
- Training, exam and coaching of electrician personnel.





TECHNICAL CONSULTING:

At Project phase:

⇒ For the Owner:

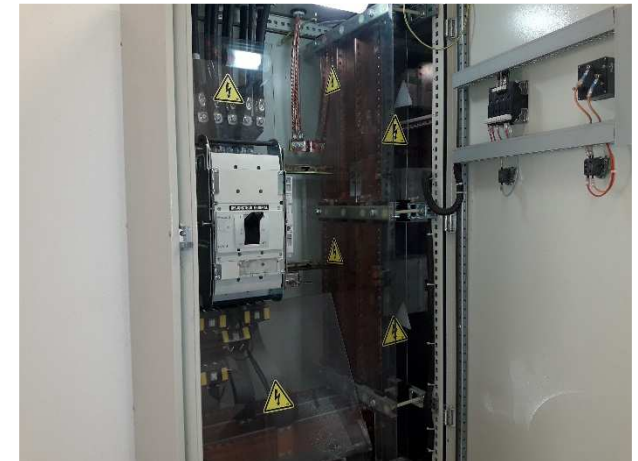
- Propositions of networks structures, comparisons, phasing
- Assistance in writing technical specifications
- Technical evaluation of offers
- Follow up and validation of technical documents before completion
- Site supervision

⇒ For the Project manager:

- Technical design assistance
- Assistance in installations sizing, calculations, choice and setting of protections
- Participation in tests / recording of results

At Operating phase:

- Analysis of causes of incidents, and proposals for corrective actions
- Reliability and security of networks
- Checking of the suitability of capacitor banks
- Assistance for the modification of operating conditions: adaptation of networks and protections





TRAINING & COACHING:

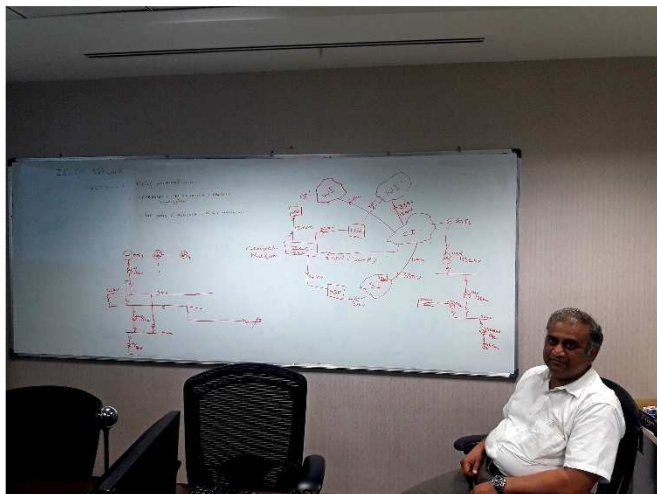
Professional training:

- ✓ Design of high and low voltage electrical installations
 - ✓ Operations and maintenance of high and low voltage electrical installations
 - ✓ Reliability of distribution networks: choice and sizing of protections
 - ✓ Notions on harmonics pollution, compensation of reactive energy
 - ✓ Implementation of generator sets, inverters and variable speed drives
- Possibility to define programs and durations adapted to specific needs.*



Coaching & Skills assessment:

- ✓ Monitoring and transfer of skills for staff responsible for the design or maintenance of facilities
- ✓ Assessment of the technical skill of maintenance staff to ensure their adaptation to the occupied position, their development and the possible need for training
- ✓ Assistance in the development of a staff training plan





AREAS OF INTERVENTION:

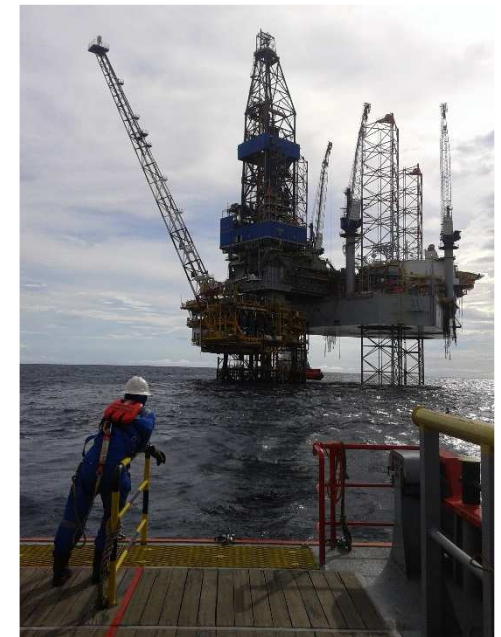
Various areas of intervention:

- Power plants (solar, wind, hydraulic, thermal)

- Industries:
 - o Aeronautics and Space
 - o Oil & Gas
 - o Paper mill
 - o Food industry

 - o ...

- Tertiary



And multiple skills:

- ✓ Consulting for the choice of a facility: prevention of anomalies, impacts on the networks and on equipment
- ✓ Checking of feasibility and profitability studies
- ✓ Technical supports for the improvement of performances
- ✓ Production monitoring (for power plants)



